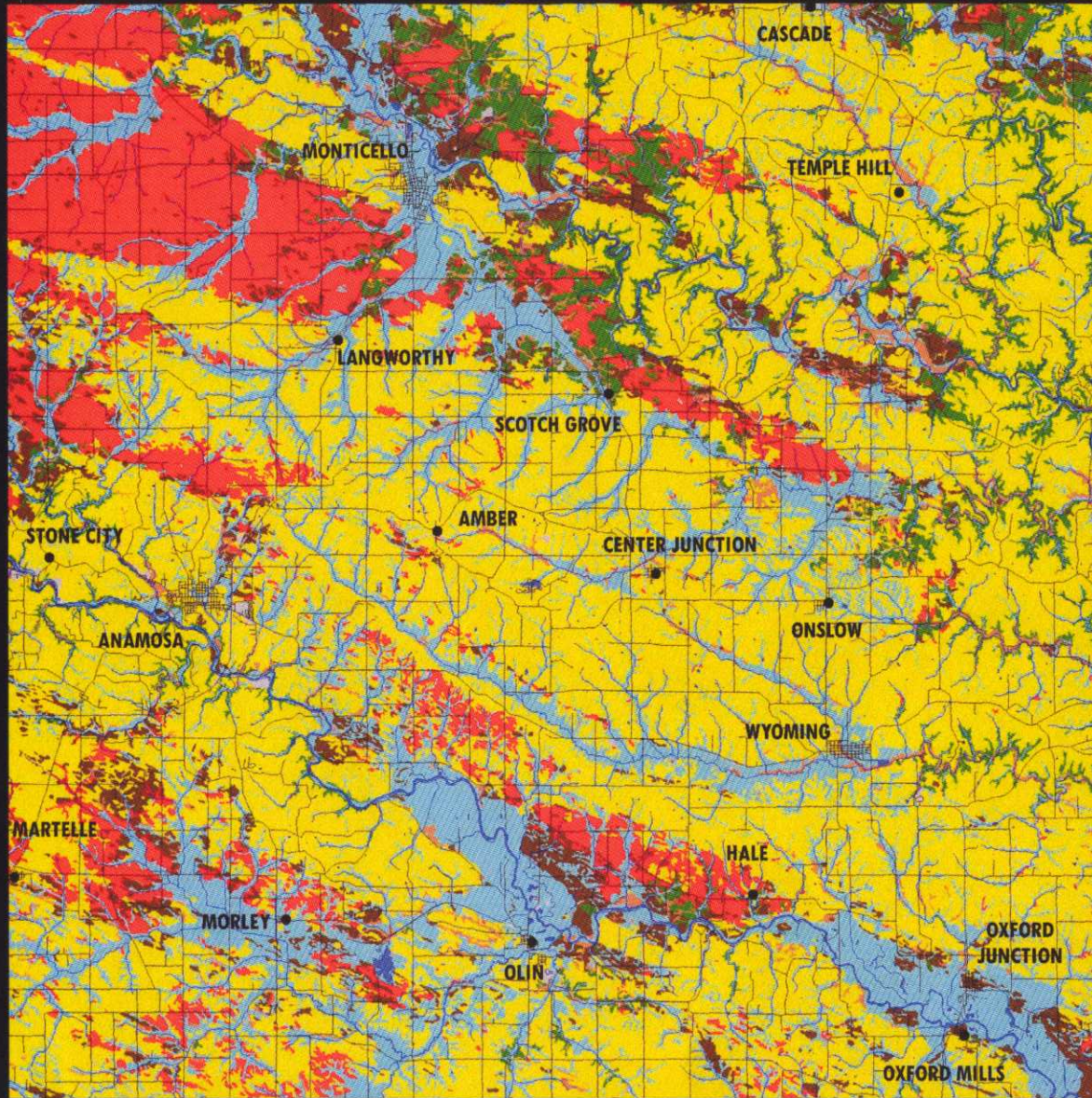










SOIL PARENT MATERIAL

JONES COUNTY, IOWA



PARENT MATERIAL	ACRES	%
-----------------	-------	---

 Alluvium	79,770	22
 Eolian	22,560	6
 Manmade Features	1,356	<1
 Loess	194,168	53
 Bedrock	18,545	5
 Till	38,948	10
 Water	2,569	1
 Local Alluvium	11,250	3

0 2 4 6 8 10

Miles



DATA FROM IOWA GEOLOGICAL SURVEY
2005
JONES COUNTY CONSERVATION BOARD